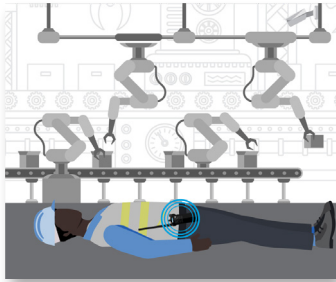


USE CASE WORKER DOWN

Safe Manufacturing

Operational View



DETECT

WORKER DOWN ALERT

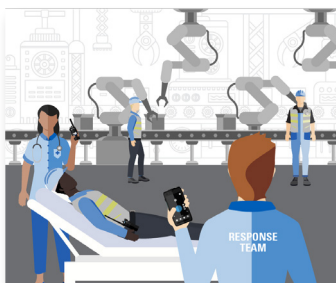
Man Down feature on radio detects a fallen worker in remote area of the plant and automatically sends an alert over the radio network to security and operations.



ANALYZE

REAL-TIME VIDEO VERIFICATION

Control room operator receives the emergency alert, verifies the location of the worker and uses live video to evaluate and monitor the circumstances of the incident.



COMMUNICATE

NOTIFICATION COMMUNICATED

Based on defined protocols, the plant emergency response team is dispatched to assist the worker and investigate using real-time location data.

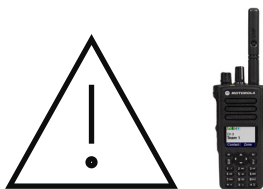


RESPOND

FIRST RESPONSE DISPATCHED

On-site or local first responders arrive to provide medical attention. An incident is logged with pre-populated fields and relevant data for analysis and claims

Technology View



DETECT

- Radio Communications/Man Down Detection/Emergency Button



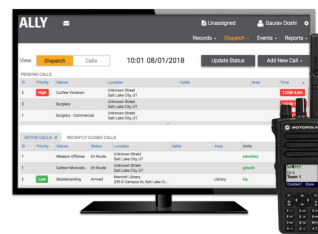
ANALYZE

- Avigilon Video Security Cameras
- Avigilon Control Center
- Identity Search
- CommandCentral Aware Enterprise



COMMUNICATE

- Radio Communications with GPS: Voice & Multimedia
- WAVE PTX: Broadband Push-to-Talk with Multimedia Sharing
- Dispatch Software
- CommandCentral Aware Enterprise



RESPOND

- Critical Connect
- Ally Incident Management



*Camera footage is for illustrative purposes only

Motorola Solutions, Inc. 500 West Monroe Street, Chicago, IL 60661 U.S.A. motorolasolutions.com

MOTOROLA, MOTO, MOTOROLA SOLUTIONS and the Stylized M Logo are trademarks or registered trademarks of Motorola Trademark Holdings, LLC and are used under license. All other trademarks are the property of their respective owners. © 2021 Motorola Solutions, Inc. All rights reserved. 01-2021